



### Reading Results

#### Objective

The student will gain speed and accuracy in reading connected text.

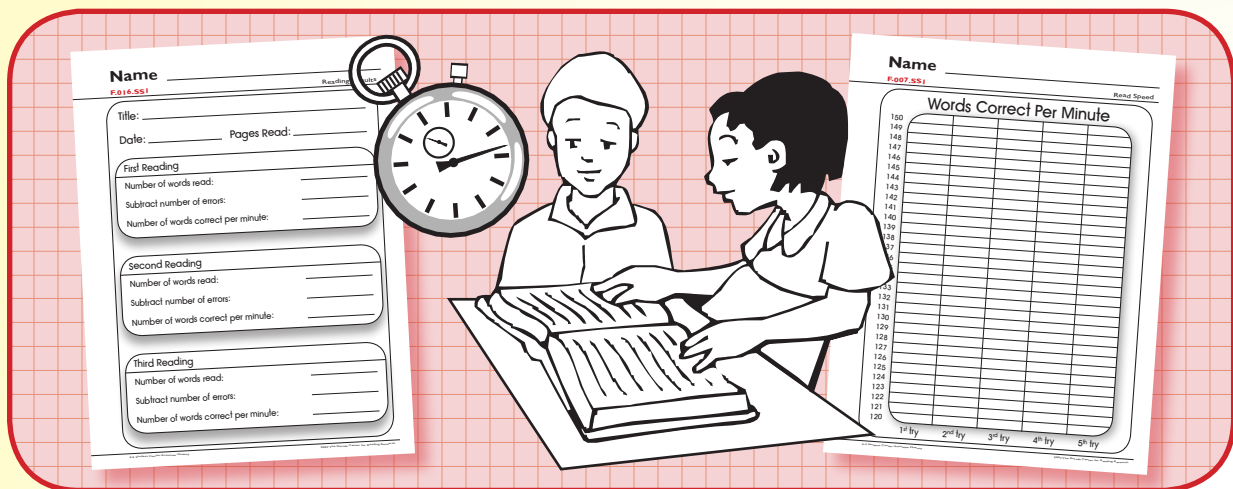
#### Materials

- ▶ Passage, book, or text  
*Choose book passages or other text within students' instructional-independent reading level range. Make two copies and laminate. Indicate the number of words in text.*
- ▶ Reading record (Activity Master F.016.SS1)
- ▶ Words correct per minute graph (Activity Master F.007.SS1)  
*This graph records 120-150 words correct per minute. Other graphs to record 90-120, 150-180, and 180-210 words correct per minute can be found at F.007.SS2, F.007.SS3, and F.007.SS4.*
- ▶ Pencils
- ▶ Timer (e.g., digital)
- ▶ Vis-à-Vis® markers

#### Activity

Students time repeated readings and graph words correct per minute.

1. Provide each student with a copy of the selected text, reading record, and words correct per minute graph. Provide students with a timer.
2. Working in pairs, student one sets the timer for one minute and orally reads the text. Student two follows along, using a Vis-à-Vis® marker to mark words read incorrectly.
3. Continue reading and marking text until the timer rings. Student one completes the reading record and words correct per minute graph with the assistance of student two.
4. Student one rereads the text two more times, attempting to increase speed and accuracy.
5. Reverse roles and continue the activity.
6. Peer evaluation



#### Extensions and Adaptations

- ▶ Make flash cards of words read incorrectly and practice in a timed activity.
- ▶ Use graphs to record weekly progress (Activity Master F.016.SS2 and F.016.SS3). Indicate words correct per minute (wcpm) target numbers on blank lines.
- ▶ Use graph to record monthly progress (Activity Master F.016.SS4).

Name \_\_\_\_\_

**F.016.SSI**

Reading Results

Title: \_\_\_\_\_

Date: \_\_\_\_\_ Pages Read: \_\_\_\_\_

### First Reading

Number of words read: \_\_\_\_\_

Subtract number of errors: \_\_\_\_\_

Number of words correct per minute: \_\_\_\_\_

### Second Reading

Number of words read: \_\_\_\_\_

Subtract number of errors: \_\_\_\_\_

Number of words correct per minute: \_\_\_\_\_

### Third Reading

Number of words read: \_\_\_\_\_

Subtract number of errors: \_\_\_\_\_

Number of words correct per minute: \_\_\_\_\_





# Name \_\_\_\_\_

Reading Results

**F.016.SS4**

## Progress Graph

|  | Week 1<br>Dates: _____ |   |   |    |   | Week 2<br>Dates: _____ |   |   |    |   | Week 3<br>Dates: _____ |   |   |    |   | Week 4<br>Dates: _____ |   |   |    |   |
|--|------------------------|---|---|----|---|------------------------|---|---|----|---|------------------------|---|---|----|---|------------------------|---|---|----|---|
|  | M                      | T | W | Th | F | M                      | T | W | Th | F | M                      | T | W | Th | F | M                      | T | W | Th | F |
| (wcpm)                                   |                        |   |   |    |   |                        |   |   |    |   |                        |   |   |    |   |                        |   |   |    |   |
| (wcpm)                                   |                        |   |   |    |   |                        |   |   |    |   |                        |   |   |    |   |                        |   |   |    |   |
| (wcpm)                                   |                        |   |   |    |   |                        |   |   |    |   |                        |   |   |    |   |                        |   |   |    |   |
| (wcpm)                                   |                        |   |   |    |   |                        |   |   |    |   |                        |   |   |    |   |                        |   |   |    |   |
| (wcpm)<br>words<br>correct<br>per minute |                        |   |   |    |   |                        |   |   |    |   |                        |   |   |    |   |                        |   |   |    |   |