



Phonological Awareness

PA.035

Phoneme Matching

Sound Pictures and Picture Puzzles

Objective

The student will match medial phonemes in words.

Materials

- ▶ Poster board

Draw a T-chart.

- ▶ Medial sound header cards (Activity Master PA.035.AM1)

Place at the top of the T-chart.

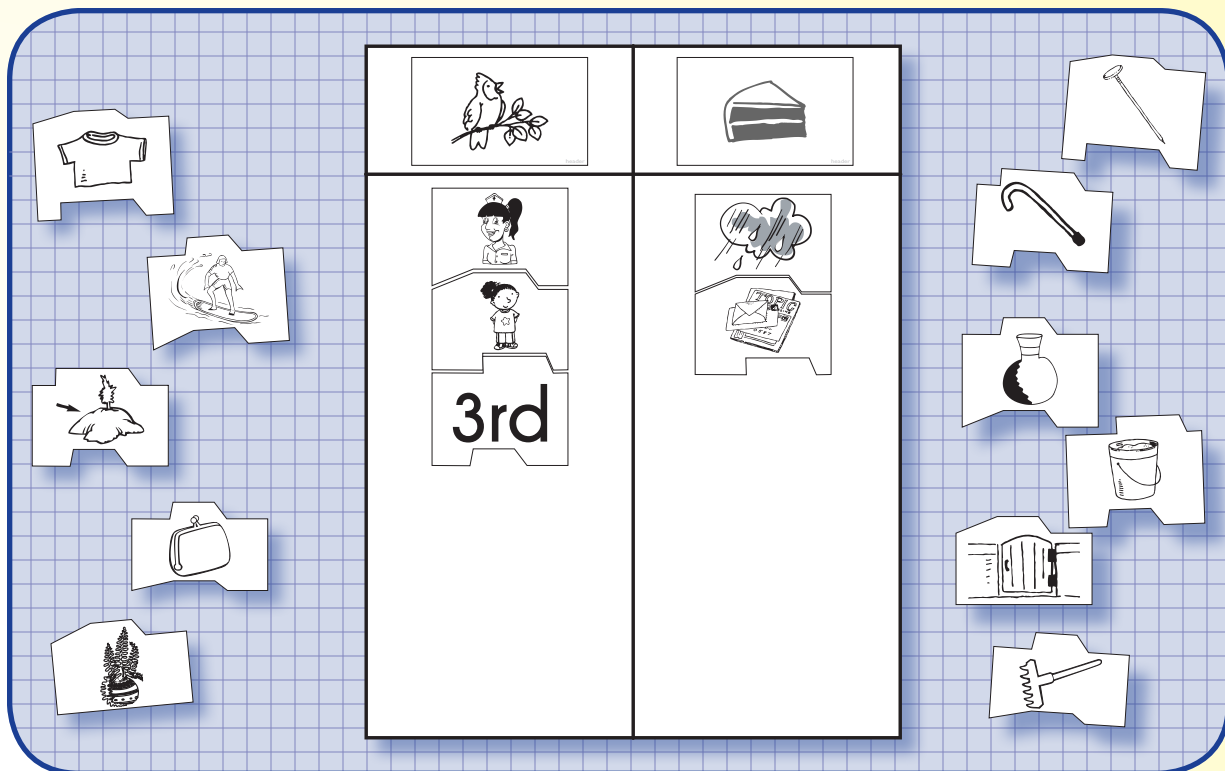
- ▶ Medial sound picture puzzles (Activity Master PA.035.AM2a - PA.035.AM2b)

Copy on card stock and cut.

Activity

Students sort medial sound pictures and assemble to create puzzles.

1. Place the T-chart on a flat surface. Scatter the pieces of the medial sound picture puzzles around the chart.
2. Taking turns, students select a puzzle picture, name the picture, and say its medial sound (e.g., “mail, /ā/”). Place in column under corresponding header card (i.e., cake).
3. Continue until all pieces are placed under corresponding header card. Assemble each puzzle.
4. Peer evaluation



Extensions and Adaptations

- ▶ Illustrate other pictures with the same medial sounds as those on the student T-chart (Activity Master PA.035.SS).
- ▶ Make other target sound picture puzzles to match (Activity Master PA.035.AM3).

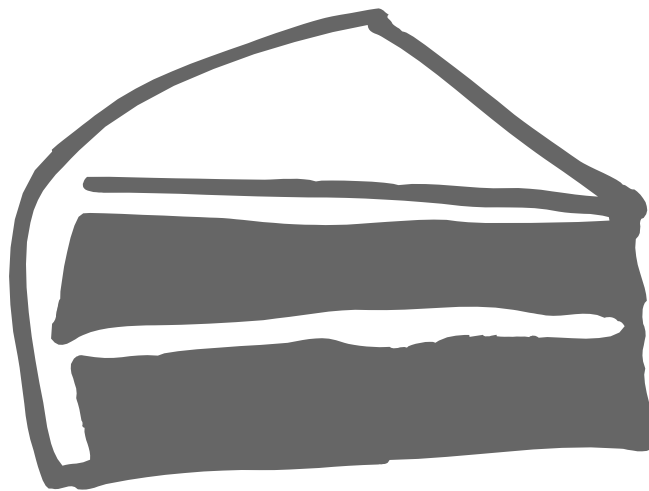
Phonological Awareness

Sound Pictures and Picture Puzzles

PA.035.AMI



header



header

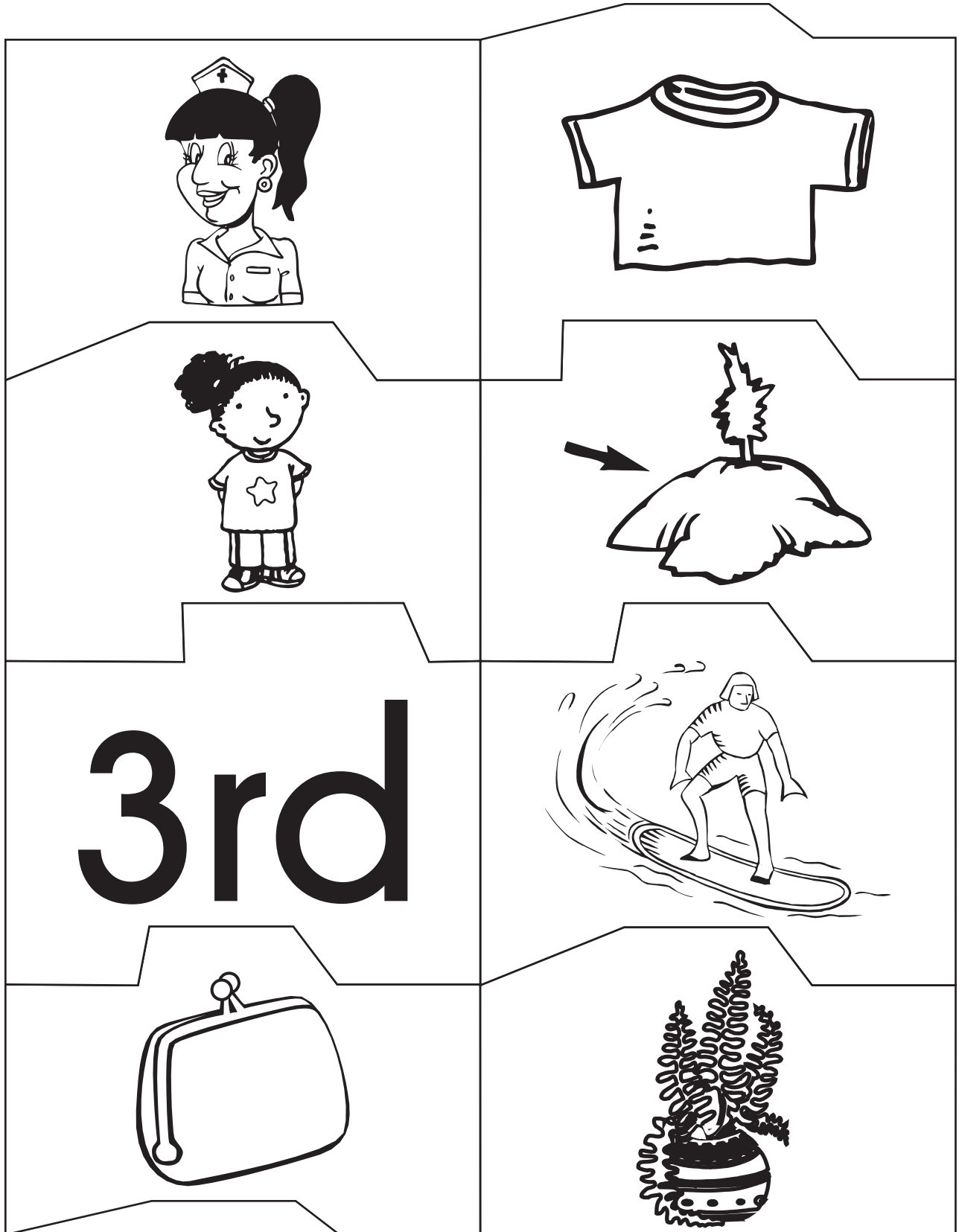
medial sound header cards: bird, cake



Phonological Awareness

PA.035.AM2a

Sound Pictures and Picture Puzzles



medial sound picture cards: nurse, shirt, girl, dirt, third, surf, purse, fern



Phonological Awareness

Sound Pictures and Picture Puzzles

PA.035.AM2b



medial sound picture cards: rain, nail, mail, cane, pail, vase, rake, gate

Name _____

PA.035.SS

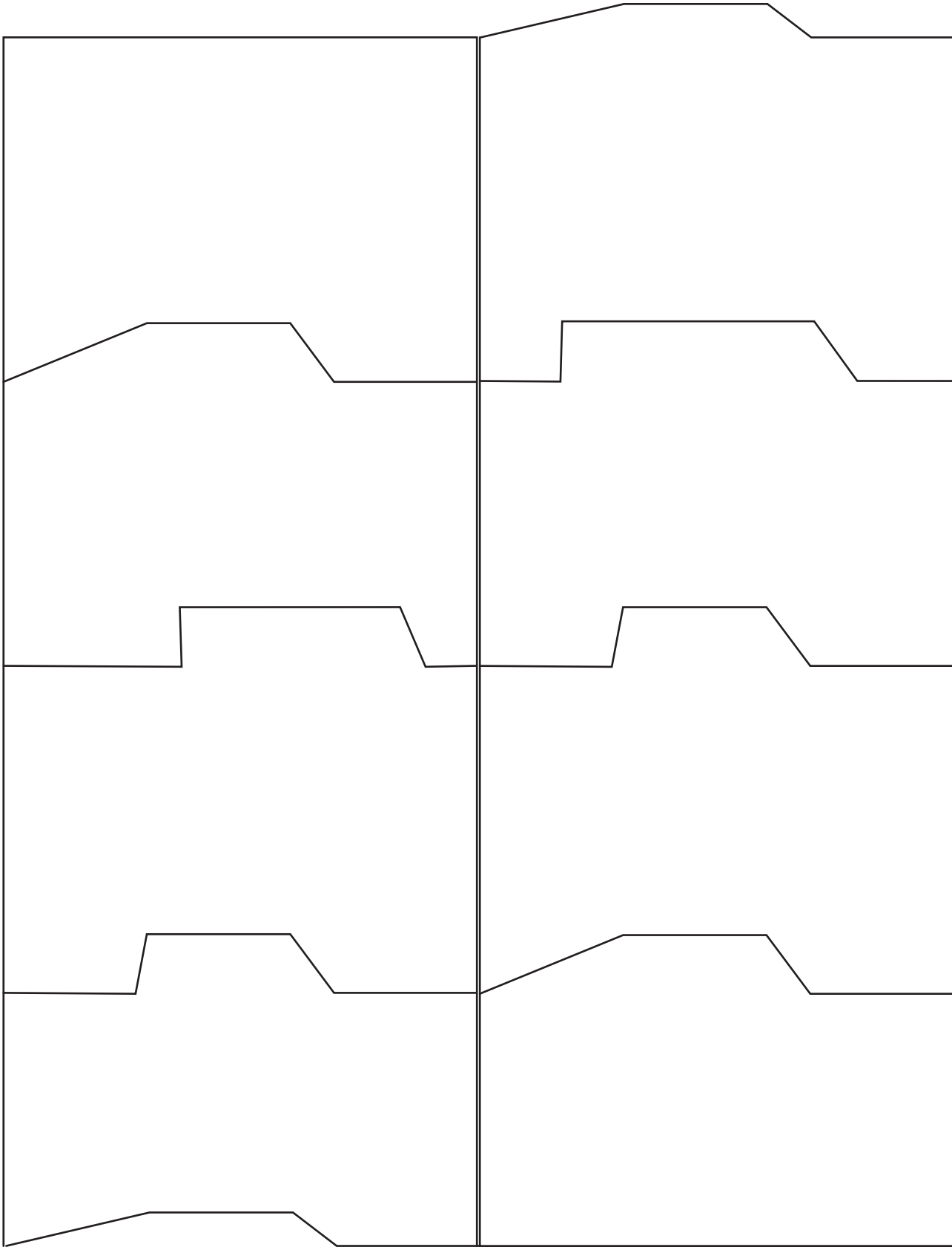
Sound Pictures and Picture Puzzles



Phonological Awareness

Sound Pictures and Picture Puzzles

PA.035.AM3



blank puzzle pieces